

JIANGSU DAELIM

江苏林达鸿利电气有限公司
JIANGSU DAELIM ELECTRIC CO., LTD.



SERVICES TEL 联系电话: +86-10-65002471 / 65001715 0523-88698088 (国内业务)

F A X 传 真: +86-10-65001719

MOBILE TEL 手 机: +86-13051965423 +86-17600626876

E M A I L 邮 箱: SERVICE@DAELIM-ELECTRIC.COM

W E B S I T E 网 址: WWW.DAELIMBELEFIC.COM

A D D 地 址:

BEIJING OFFICE 北京办事处:

2707, No.4 BUSINESS BUILDING, CHINA CENTRAL PLACE, CHAYANG DISTRICT, BEIJING, CHINA

北京市朝阳区建国路89号华贸4号商务楼2707

JIANGSU FACTORY 江苏工厂:

6 BAILONG ROAD, LOUZHUANG TOWN, JIANGYAN DISTRICT, TAIZHOU CITY, JIANGSU PROVINCE, CHINA

江苏省泰州市姜堰区楼庄镇白龙路6号

多种标准
MULTIPLE STANDARDS /
定制生产
PRODUCTION LINE
CUSTOMIZATION


DAELIM BELEFIC[®]

01

COMPANY PROFILE

公司简介

Electric, with an Edge



江苏林达鸿利电气有限公司

从事高品质电气产品和设备的设计，工程和制造已有15年以上的经验。

江苏林达拥有丰富的专家和专业知​​识，可帮助我们快速解决客户的问题。我们的团队经过系统的培训，并致力于通过质量准则和实践来不断改进。我司业务，经验和技​​术建立在我们多年来积累的电气产品经验的基础上。对于江苏林达而言，我们的使命一直是满足客户需求，并通过成为客户可信赖的合作伙伴来赢得客户的信任。

我们热忱的客户服务，产品创新，工程卓越以及强烈的社会与环境责任感使我们成为全球电气行业的重要和可信赖的电源解决方案合作伙伴。林达为客户做的事情很特别，我们希望与您分享。

We're Jiangsu Daelim Electric Co. Ltd. We've been dealing with the design, engineering and manufacturing of high quality electric products and equipment for over 15 years.

JIANGSU DAELIM is full of experts and professional, this helps us to solve the customers' problems quickly. Our team had systematic training and is committed to continuous improvement by the quality guidelines and practices. Our business, experience, and technology is built on a foundation of electric product expertise we've built over years. For JIANGSU DAELIM, our mission has always been to meet the customers's needs and win the customers trust by being an trustful partner to them.

Our dedicated customer service, product innovation, engineering excellence and strong social & environmental responsibility sense have made us to become a valued & trusted power solutions partner for globe electric industry. What JIANGSU DAELIM does for clients is special, and we want to share this with you.

Multiple standards /
Production line customization

02 /

BRAND STORY

品牌故事

“品牌+优势”这个概念是我们作为DAELIM BELIFIC所做的一切工作的核心，也是使我们成为当今品牌的原因。

DAELIM BELEFIC致力于为客户提供最优质的产品与服务。我们存在的价值与优势就是我们是DAELIM BELEFIC。每当我们革新产品，向客户交货以及在与已经成为我们合作伙伴的长期客户打交道时，我们都会发挥独特的优势。我们正在成为世界领先的变压器制造商的道路上阔步前进，我们以我们的实际行动争取客户。在此过程中，我们始终坚守“品牌+优势”的信念，希望您与我们同行。

The DAELIM EDGE+ ADVANTAGE is a concept that is at the core of everything we do as DAELIM BELIFIC and it is what allowed us to become the brand we are today.

The DAELIM BELEFIC story is a story about a brand that cares about achieving the best for it's client. When we coined the term Electric, with a Belefic Edge we thought how we could bring rockstar electrical products to clients at the highest level. This EDGE is what we all posses here at DAELIM BELEFIC. We bring that edge every time we innovate a product, we bring it when we deliver our product line to clients and we bring it when we deal with our long-term clients who have become partners with us. We're on a path to be the leading electrical transformer manufacturer in the world and we're taking all our clients with us. We're doing this on the back of our DAELIM BELEFIC EDGE+ ADVANTADGE and we want you with us for the ride.



ABOUT US

关于我们

03

A/ 我们是谁？

我们是DAELIM BELEFIC。我们从事高品质电气产品和设备的设计，工程和制造已超过15年，我们是基于“品牌+优势”概念创建的品牌。这一理念使我们能够为客户提供多种标准，最先进的服务以及专家级的定制技能。

B/ 我们做什么？

我们是一家电气产品和设备制造商，利用“品牌+优势”的特性不断赢得客户的支持与信任。

C/ 为什么与我们合作？

品牌+优势

1. 多标准生产能力。为客户提供多种标准的产品能力使我们与众不同。
2. 服务执行能力。我们以闪电般的速度交付高品质的产品。
3. 产品定制能力。不断满足客户日益增长的需求是我们得到客户的支持的重要条件。

A/ Who Are We?

We're DAELIM BELEFIC. We've been dealing with the design, engineering and manufacturing of high quality electric products and equipment for over 15 years. We're a brand built around a concept called DAELIM EDGE+ ADVANTAGE. A concept in which has allowed us to deliver multiple standards, cutting edge service /speed, and expert level customization skills to our client.

B/ What We Do?

We're an Electric product and equipment manufacturer that leverages our DAELIM EDGE+ Advantadge to win our clients commitments.

C/ Why Work With Us?

THE DAELIM EDGE+ ADVANTADGE

1. Multiple standards ability. The ability to service clients at this level is what makes us special.
2. Service/Speed execution ability. We deliver high level products at lightning speeds.
3. Product line customization ability. Our ability to meet clients growing demands is what allows to win them.

CONTENTS

目录

04



企业设备
Enterprise
Equipment

资质报告
Qualification
Report

220kV 电力变压器
220kV Power
Transformer

110kV 66kV 电力变压器
110kV 66kV Power
Transformer

S(B)H15-M 系列密封式
非晶合金变压器
S(B)H15-M Series
Sealed Amorphous
Alloy Transformer

三相箱式变压器
Three Phase Pad
Mounted Transformer

YB-PRE箱式变电站系列
(欧式箱变)
YB-PRE Compact Substation
(European box variable)

销售记录
Sales
Record

企业服务
Enterprise
Service

资质荣誉
Qualification
Honor

合作伙伴
Sales
Partner

三相油浸式配电变压器
Three Phase Oil-Immersed
Distribution Transformer

三相环氧树脂干式变压器
Three Phase Epoxy-resin
Dry-type Transformer

单相箱式变压器
Single Phase Pad
Mounted Transformer

单相变压器
Single Phase
Transformer

国外工程案例
Overseas
Project Cases

企业设备

ENTERPRICE EQUIPMENT



雷电冲击设备
Lighting Impulse Equipment



干燥箱
Transformer Drying Oven



测试控制台
Test Console



硅钢片剪切机
Silicon Steel Sheet Shearing Automatic Line



环氧真空浇筑设备
Epoxy Vacuum Pouring Machines

资质荣誉

QUALIFICATION HONOR

江苏林达鸿利电气有限公司主要生产和制造各种变压器，电力变压器、油浸式配电变压器、非晶合金变压器、单相/三相箱变、干式变压器、特种变压器等。产品已通过多个知名国内、国际检测机构的认证。

Jiangsu Daelim Electric Co., Ltd mainly produces and manufactures various transformers, power transformers, oil-immersed distribution transformers, amorphous alloy transformers, single-phase/three-phase pad-mounted transformers, dry-type transformers, special transformers, etc. The transformers have passed the certification of many well-known domestic and international testing institutions.





营业执照

(副本)

统一社会信用代码
91321204MA1YXUDM4N (1/1)

名称 江苏林达鸿利电气有限公司

类型 有限责任公司(自然人投资或控股)

法定代表人 董斌

经营范围 高、低压控制柜、变压器、稳压器研发、制造、销售，电气设备、机电设备、电线电缆销售，货物或技术进出口业务（国家禁止或限制进出口的货物和技术进出口除外），（依法须经批准的项目，经相关部门批准后方可开展经营活动）许可项目：医用口罩生产（依法须经批准的项目，经相关部门批准后方可开展经营活动，具体经营项目以审批结果为准）一般项目：医用口罩零售；医用口罩批发；日用口罩（非医用）生产；日用口罩（非医用）销售（除依法须经批准的项目外，凭营业执照依法自主开展经营活动）

编号 321204666202004260013



扫描二维码“国家企业信用信息公示系统”了解更多登记、备案、许可、监管信息。

注册资本 3000万元整

成立日期 2019年08月20日

营业期限 2019年08月20日至*****

住所 泰州市姜堰区姜庄镇白龙路6号

登记机关 泰州市姜堰区行政审批局

2020年04月28日

国家企业信用信息公示系统网址：<http://www.gsxt.gov.cn>

市场主体应当于每年1月1日至6月30日通过国家企业信用信息公示系统报送公示年度报告。

国家市场监督管理总局监制

资质报告

QUALIFICATION REPORT

多年来，我们公司以可靠的产品质量和完善的售后服务，得到了广大用户的信赖和好评。产品已广泛用于各地电力系统及各行各业之中，在以后的征程中，林达鸿利变压器将再接再厉，为尊敬的客户提供更好的产品和服务。

For many years, our company on the reliable product quality and perfect after- sale service, obtained usercommunities trust and praise. The products have been widely used in power system and among all industries in the process. In the future, Daelim transformer will will make persistent efforts to provide better products and services for our esteemed customers.



合作伙伴

SALES PARTNER



220kV 电力变压器

220kV Power Transformer



介绍 General

大林牌220kV变压器，采用日本东芝的分析软件和本公司特有的计算和程序验证，对变压器铁芯、线圈、器身、引线、邮箱等部件进行全方位的优化设计和验证，确保其性能。优越的工艺设计、精心材料选取、高效的生产制造，使得变压器具有体积小，重量轻，低损耗，低局放、低噪音等特点，产品品质优越、节能环保、安装维护方便，运行可靠并有效降低了产品运行费用。

Daelim 220kV high voltage transformer, use Japanese Toshiba analysis software and our company special calculation and validation procedures to the transformer core, winding, implement body, lead, fuel tanks, etc. Parts of the optimal design and carry on the omni-directional validation, ensure product performance. Superior process equipment, elaborate material selecting and efficient manufacturing, making the transformer has small volume, light weight, low loss, low partial discharge, low noise characteristics, the product quality is superior, energy conservation and environmental protection, easy installation and maintenance, reliable operation and effectively reduced products running costs.

技术参数 Technical Data Sheet

220kV级三相双绕组有载调压电力变压器技术参数

Technical Data for 220KV Class Three Phase Two Winding OLTC Power Transformer

| 额定容量 (KVA) Rated Power | 高压 (KV) High Voltage | 低压 (KV) Low Voltage | 联结组别 Connection Symbol | 短路阻抗(%) Short Circuit Impedence | 损耗(W) Loss | | 空载电流 (%) No load Current |
|---------------------------------|-------------------------------|------------------------------|------------------------------|--|-------------------------|-------------------------|-----------------------------------|
| | | | | | 空载损耗(W) No-load Loss | 有载损耗(W) On-load Loss | |
| 31500 | 220 242 | 6.3 | YNd11 | 12~14 | 30000 | 128000 | 0.7 |
| 40000 | | 6.6 | | | 36000 | 149000 | 0.63 |
| 50000 | | 10.5 | | | 43000 | 180000 | 0.56 |
| 63000 | | 11 | | | 50000 | 209000 | 0.56 |
| 90000 | | 20, 34.5 | | | 64000 | 274000 | 0.49 |
| 12000 | | 35, 37, | | | 79000 | 329000 | 0.49 |
| 15000 | | 69 | | | 93000 | 3850000 | 0.42 |
| 18000 | | | | | 10800 | 445000 | 0.42 |

注：以上数据仅以我司标准设计为准，特殊要求可定制。

Note: The above data is only subject to our standard design, special requirement can be customized.

220kV级三相双绕组无载调压电力变压器技术参数

Technical Data for 220KV Class Three Phase Two Winding NLTC Power Transformer

| 额定容量 (KVA) Rated Power | 高压 (KV) High Voltage | 低压 (KV) Low Voltage | 联结组别 Connection Symbol | 短路阻抗(%) Short Circuit Impedence | 损耗(W) Loss | | 空载电流 (%) No load Current |
|---------------------------------|-------------------------------|------------------------------|------------------------------|--|-------------------------|-------------------------|-----------------------------------|
| | | | | | 空载损耗(W) No-load Loss | 有载损耗(W) On-load Loss | |
| 31500 | 220 242 | 6.3 | YNd11 | 12~14 | 28000 | 128000 | 0.7 |
| 40000 | | | | | 33000 | 149000 | 0.7 |
| 50000 | | | | | 39000 | 180000 | 0.65 |
| 63000 | | | | | 46000 | 209000 | 0.65 |
| 75000 | | | | | 54000 | 238000 | 0.6 |
| 90000 | | | | | 62000 | 274000 | 0.55 |
| 120000 | | | | | 75000 | 328000 | 0.55 |
| 150000 | | | | | 90000 | 395000 | 0.5 |
| 160000 | | | | | 94900 | 404000 | 0.49 |
| 180000 | | | | | 102000 | 436000 | 0.46 |
| 240000 | 128000 | 539000 | 0.42 | | | | |

注：以上数据仅以我司标准设计为准，特殊要求可定制。

Note: The above data is only subject to our standard design, special requirement can be customized.

110kV 66kV 电力变压器

110kV 66kV Power Transformer



介绍 General

110kV和66kV级电力变压器是在吸收国内外先进技术的基础上，对变压器铁芯、线圈、器身、引线、油箱等部件进行全方位的优化设计及验证，开发出的低局放、低损耗、低噪音、重量轻、高可靠性的产品。其卓越的性能赢得了广大用户和有关专家的高度评价。本产品具有稳定、经济、环保等特点，适用于发电厂、变电站、大型工矿石化企业等。

110kV and 66kV power transformers are designed and optimized by absorbing and utilizing advanced technologies at home and abroad to optimize the transformer core, coil, body, leads, fuel tank and other components, which features low partial discharge, low loss, low noise, light weight and high reliability. Its excellent performance has won high praise from users and relevant experts. This product has the characteristics of stability, economy and environmental protection, and is suitable for power plants, substations, large industrial and mineralization enterprises, etc.

技术参数 Technical Data Sheet

110kV级三相双绕组有载调压电力变压器技术参数

Technical Data for 110KV Class Three Phase Two Winding OLTC Power Transformer

| 额定容量 (KVA) Rated Power | 高压 (KV) High Voltage | 低压 (KV) Low Voltage | 联结组别 Connection Symbol | 短路阻抗(%) Short Circuit Impedence | 损耗(W) Loss | | 空载电流 (%) No load Current |
|---------------------------------|-------------------------------|------------------------------|------------------------------|--|-------------------------|-------------------------|-----------------------------------|
| | | | | | 空载损耗(W) No-load Loss | 有载损耗(W) On-load Loss | |
| | | | | | 6300 | 110 121 | 6.3 6.6 10.5 11 |
| 8000 | 12000 | 45000 | 0.8 | | | | |
| 10000 | 14200 | 53000 | 0.74 | | | | |
| 12500 | 16800 | 63000 | 0.74 | | | | |
| 16000 | 20200 | 77000 | 0.69 | | | | |
| 20000 | 24000 | 93000 | 0.69 | | | | |
| 25000 | 28400 | 110000 | 0.64 | | | | |
| 31500 | 33800 | 133000 | 0.64 | | | | |
| 40000 | 40400 | 156000 | 0.58 | | | | |
| 50000 | 47800 | 194000 | 0.58 | | | | |
| 63000 | 56800 | 234000 | 0.52 | | | | |

注：以上数据仅以我司标准设计为准，特殊要求可定制。

Note: The above data is only subject to our standard design, special requirement can be customized.

110kV级三相双绕组无载调压电力变压器技术参数

Technical Data for 110KV Class Three Phase Two Winding NLTC Power Transformer

| 额定容量 (KVA) Rated Power | 高压 (KV) High Voltage | 低压 (KV) Low Voltage | 联结组别 Connection Symbol | 短路阻抗(%) Short Circuit Impedence | 损耗(W) Loss | | 空载电流 (%) No load Current |
|---------------------------------|-------------------------------|------------------------------|------------------------------|--|-------------------------|-------------------------|-----------------------------------|
| | | | | | 空载损耗(W) No-load Loss | 有载损耗(W) On-load Loss | |
| | | | | | 6300 | 110 121 | 6.3 6.6 10.5 11 |
| 8000 | 9000 | 42500 | 0.69 | | | | |
| 10000 | 10500 | 50200 | 0.64 | | | | |
| 12500 | 12400 | 59500 | 0.64 | | | | |
| 16000 | 15000 | 73100 | 0.59 | | | | |
| 20000 | 17800 | 88400 | 0.59 | | | | |
| 25000 | 21000 | 105000 | 0.54 | | | | |
| 31500 | 25000 | 126000 | 0.54 | | | | |
| 40000 | 29900 | 148000 | 0.56 | | | | |
| 50000 | 35300 | 178500 | 0.52 | | | | |
| 63000 | 41900 | 221000 | 0.48 | | | | |

注：以上数据仅以我司标准设计为准，特殊要求可定制。

Note: The above data is only subject to our standard design, special requirement can be customized.

110kV级三相三绕组有载调压电力变压器技术参数

Technical Data for 110KV Class Three Phase Three Winding OLTC Power Transformer

| 额定容量 (KVA) Rated Power | 高压 (KV) High Voltage | 中压 (KV) Middle Voltage | 低压 (KV) Low Voltage | 联结组别 Connection Symbol | 短路阻抗(%) Short Circuit Impedence 降压 Step-down | | 损耗(W) Loss | | 空载电流 (%) No load Current |
|---------------------------------|-------------------------------|---------------------------------|------------------------------|------------------------------|---|--|-------------------------|-------------------------|-----------------------------------|
| | | | | | | | 空载损耗(W) No-load Loss | 有载损耗(W) On-load Loss | |
| | | | | | | | | | |
| 6300 | 110 121 | 35 37 38.5 | 6.3 6.6 10.5 11 | YNyn0d11 | H.V.-M.V. 高-中 | | 12000 | 47000 | 0.95 |
| 8000 | | | | | H.V.-M.V. 高-中 | | 14400 | 56000 | 0.95 |
| 10000 | | | | | H.V.-M.V. 高-中 | | 17100 | 66000 | 0.89 |
| 12500 | | | | | H.V.-M.V. 高-中 | | 20200 | 78000 | 0.89 |
| 16000 | | | | | H.V.-L.W. 高-低 | | 24200 | 95000 | 0.84 |
| 20000 | | | | | H.V.-L.W. 高-低 | | 28600 | 112000 | 0.84 |
| 25000 | | | | | H.V.-L.W. 高-低 | | 33800 | 133000 | 0.78 |
| 31500 | | | | | M.V.-L.V. 中-低 | | 40200 | 157000 | 0.78 |
| 40000 | | | | | M.V.-L.V. 中-低 | | 48200 | 189000 | 0.73 |
| 50000 | | | | | M.V.-L.V. 中-低 | | 56900 | 225000 | 0.73 |
| 63000 | | | | | M.V.-L.V. 中-低 | | 67700 | 270000 | 0.67 |

注：以上数据仅以我司标准设计为准，特殊要求可定制。

Note: The above data is only subject to our standard design, special requirement can be customized.

66kV级三相双绕组有载调压电力变压器技术参数

Technical Data for 66KV Class Three Phase Two Winding OLTC Power Transformer

| 额定容量 (KVA) Rated Power | 高压 (KV) High Voltage | 低压 (KV) Low Voltage | 联结组别 Connection Symbol | 短路阻抗(%) Short Circuit Impedence | 损耗(W) Loss | | 空载电流 (%) No load Current |
|---------------------------------|-------------------------------|------------------------------|------------------------------|--|-------------------------|-------------------------|-----------------------------------|
| | | | | | 空载损耗(W) No-load Loss | 有载损耗(W) On-load Loss | |
| | | | | | | | |
| 6300 | 63 66 69 | 6.3 6.6 10.5 11 | YNd11 | 9 | 8250 | 34000 | 0.63 |
| 8000 | | | | | 9830 | 40400 | 0.63 |
| 10000 | | | | | 11600 | 47600 | 0.75 |
| 12500 | | | | | 13600 | 56500 | 0.53 |
| 16000 | | | | | 16300 | 69500 | 0.49 |
| 20000 | | | | | 19200 | 84200 | 0.49 |
| 25000 | | | | | 22600 | 99500 | 0.42 |
| 31500 | | | | | 26800 | 120000 | 0.42 |
| 40000 | | | | | 31900 | 140300 | 0.39 |
| 50000 | | | | | 38600 | 174300 | 0.39 |
| 63000 | | | | | 44400 | 210000 | 0.39 |

注：以上数据仅以我司标准设计为准，特殊要求可定制。

Note: The above data is only subject to our standard design, special requirement can be customized.

110kV级三相三绕组无载调压电力变压器技术参数

Technical Data for 110KV Class Three Phase Three Winding NLTC Power Transformer

| 额定容量 (KVA) Rated Power | 高压 (KV) High Voltage | 中压 (KV) Middle Voltage | 低压 (KV) Low Voltage | 联结组别 Connection Symbol | 短路阻抗(%) Short Circuit Impedence | | 损耗(W) Loss | | 空载电流 (%) No load Current |
|---------------------------------|-------------------------------|---------------------------------|------------------------------|------------------------------|---------------------------------------|-----------------|-------------------------|-------------------------|-----------------------------------|
| | | | | | 升压 Step-up | 高压 Step-down | 空载损耗(W) No-load Loss | 有载损耗(W) On-load Loss | |
| | | | | | | | | | |
| 6300 | 110 121 | 35 37 38.5 | 6.3 6.6 10.5 11 | YNyn0d11 | 高-中 | 高-中 | 9000 | 45100 | 0.7 |
| 8000 | | | | | 高-中 | 高-中 | 10800 | 53600 | 0.67 |
| 10000 | | | | | H.V.-M.V. | H.V.-M.V. | 12800 | 62900 | 0.63 |
| 12500 | | | | | 17-18 | 10.5 | 15000 | 74000 | 0.6 |
| 16000 | | | | | 高-低 | 高-低 | 20500 | 90100 | 0.56 |
| 20000 | | | | | H.V.-L.V. | H.V.-L.V. | 21400 | 106300 | 0.53 |
| 25000 | | | | | 10.5 | 17-18 | 25300 | 125800 | 0.49 |
| 31500 | | | | | 中-低 | 中-低 | 30000 | 148800 | 0.46 |
| 40000 | | | | | M.V.-L.V. | M.V.-L.V. | 35900 | 178500 | 0.39 |
| 50000 | | | | | 6.5 | 6.5 | 42400 | 212500 | 0.35 |
| 63000 | | | | | 6.5 | 6.5 | 50300 | 255000 | 0.35 |

注：以上数据仅以我司标准设计为准，特殊要求可定制。

Note: The above data is only subject to our standard design, special requirement can be customized.

66kV级三相双绕组无载调压电力变压器技术参数

Technical Data for 66KV Class Three Phase Two Winding NLTC Power Transformer

| 额定容量 (KVA) Rated Power | 高压 (KV) High Voltage | 低压 (KV) Low Voltage | 联结组别 Connection Symbol | 短路阻抗(%) Short Circuit Impedence | 损耗(W) Loss | | 空载电流 (%) No load Current |
|---------------------------------|-------------------------------|------------------------------|------------------------------|--|-------------------------|-------------------------|-----------------------------------|
| | | | | | 空载损耗(W) No-load Loss | 有载损耗(W) On-load Loss | |
| | | | | | | | |
| 6300 | 63 66 69 | 6.3 6.6 10.5 11 | YNd11 | 9 | 7500 | 34000 | 0.63 |
| 8000 | | | | | 9000 | 40400 | 0.63 |
| 10000 | | | | | 12100 | 47600 | 0.75 |
| 12500 | | | | | 12600 | 56500 | 0.53 |
| 16000 | | | | | 15100 | 69500 | 0.49 |
| 20000 | | | | | 17900 | 84200 | 0.49 |
| 25000 | | | | | 21100 | 99500 | 0.42 |
| 31500 | | | | | 25100 | 120000 | 0.42 |
| 40000 | | | | | 30000 | 140300 | 0.39 |
| 50000 | | | | | 35400 | 174300 | 0.39 |
| 63000 | | | | | 42100 | 210000 | 0.39 |

注：以上数据仅以我司标准设计为准，特殊要求可定制。

Note: The above data is only subject to our standard design, special requirement can be customized.

三相油浸式配电变压器

Three Phase Oil-Immersed Distribution Transformer

01

35KV级三相油浸式配电变压器

35KV Class Three Phase Oil-Immersed Distribution Transformer



35KV级三相油浸式配电变压器符合ANSI C57.12.00, IEC60076, GB1097 (电力变压器)和GB / T6451 (三相油浸式电力变压器的技术参 数和要求)的标准, 无负载损耗和 负载损失要低得多, 质量好, 冷轧晶粒取向硅钢铁芯类型, 优质无氧铜线圈, 外观好, 运行安全, 在全国范围 内广泛使用。

35KV class three phase oil immersed distribution transformers comply with the standard of ANSI C57.12.00, IEC60076, GB1097 (Power transformer) and GB/T6451 (Technical parameter and requirements for three phase oil-immersed power transformer) , both no-load loss and on-load loss are much lower, good quality C.R.G.O. core type, high-quality oxygen-free copper coil, good appearance, safe operation, widely used over the country.

35KV级三相油浸式配电变压器技术参数

Technical Data for 35KV Class Three Phase Oil-Immersed Distribution Transformer

| 额定容量 (KVA) Rated Power | 高压 (KV) High Voltage | 低压 (KV) Low Voltage | 联结组别 Connection Symbol | 短路阻抗(%) Short Circuit Impedance | 损耗(W) Loss | | 空载电流 (%) No load Current |
|---------------------------------|-------------------------------|------------------------------|------------------------------|--|-------------------------|-------------------------|-----------------------------------|
| | | | | | 空载损耗(W) No-load Loss | 有载损耗(W) On-load Loss | |
| | | | | | 800 | 35 | |
| 1000 | 1160 | 11500 | 1 | | | | |
| 1250 | 1380 | 13900 | 0.9 | | | | |
| 1600 | 1660 | 16600 | 0.85 | | | | |
| 2000 | 2030 | 18300 | 0.75 | | | | |
| 2500 | 2450 | 19600 | 0.75 | | | | |
| 3150 | 3010 | 23000 | 0.7 | | | | |
| 4000 | 3610 | 27200 | 0.7 | | | | |
| 5000 | 4270 | 31200 | 0.6 | | | | |
| 6300 | 5110 | 34900 | 0.6 | | | | |
| 8000 | 7000 | 38300 | 0.55 | | | | |
| 10000 | 8260 | 45100 | 0.55 | | | | |
| 12500 | 10800 | 53600 | 0.5 | | | | |
| 16000 | 11900 | 65500 | 0.5 | | | | |
| 20000 | 14100 | 79100 | 0.5 | | | | |
| 25000 | 16730 | 93500 | 0.4 | | | | |
| 31500 | 20000 | 112200 | 0.4 | | | | |

注: 以上数据仅以我司标准设计为准, 特殊要求可定制。
Note: The above data is only subject to our standard design, special requirement can be customized.

02

20KV级三相油浸式配电变压器

20KV Class Three Phase Oil-Immersed Distribution Transformer



与10KV级相比, 20KV三相油浸式配电变压器具有以下优点: 1/ 提高供电能力。2/ 确保电压质量。3/ 降低电力系统中的电能损耗等。它可以节省电力系统的建设费用, 是电力系统节能的发展产物。

Compared with 10KV class, 20KV three phase oil-immersed distribution transformer has some advantages: 1. Increase power supply capability, 2. Ensure the voltage quality. 3. Debase the electric energy loss in power system, etc. It can save the construction fee of power system. It is the developing product of energy conservation in power system.

20KV级三相油浸式配电变压器技术参数

Technical Data for 20KV Class Three Phase Oil-Immersed Distribution Transformer

| 额定容量 (KVA) Rated Power | 高压 (KV) High Voltage | 低压 (KV) Low Voltage | 联结组别 Connection Symbol | 短路阻抗(%) Short Circuit Impedance | 损耗(W) Loss | | 空载电流 (%) No load Current |
|---------------------------------|-------------------------------|------------------------------|------------------------------|--|-------------------------|-------------------------|-----------------------------------|
| | | | | | 空载损耗(W) No-load Loss | 有载损耗(W) On-load Loss | |
| | | | | | 30 | 20 | |
| 50 | 120 | 840 | 1.8 | | | | |
| 63 | 130 | 965 | 1.7 | | | | |
| 80 | 175 | 1170 | 1.6 | | | | |
| 100 | 185 | 1475 | 1.5 | | | | |
| 125 | 220 | 1755 | 1.3 | | | | |
| 160 | 250 | 2160 | 1.3 | | | | |
| 200 | 330 | 2565 | 1.1 | | | | |
| 250 | 395 | 2965 | 1 | | | | |
| 315 | 460 | 3580 | 1 | | | | |
| 400 | 555 | 4265 | 1 | | | | |
| 500 | 670 | 5465 | 1 | | | | |
| 630 | 780 | 6565 | 0.8 | | | | |
| 800 | 950 | 7465 | 0.7 | | | | |
| 1000 | 1140 | 10250 | 0.6 | | | | |
| 1250 | 1345 | 11965 | 0.6 | | | | |
| 1600 | 1630 | 14460 | 0.6 | | | | |
| 2000 | 1930 | 16990 | 0.5 | | | | |
| 2500 | 2320 | 20215 | 0.5 | | | | |

注: 以上数据仅以我司标准设计为准, 特殊要求可定制。
Note: The above data is only subject to our standard design, special requirement can be customized.

03

10KV级三相油浸式配电变压器
10KV Class Three Phase Oil-Immersed Distribution Transformer



10KV油浸式配电变压器是工矿企业配电网以及供电与配电系统中的重要设备。具有结构紧凑，外形美观，体积小，噪音低，过载能力强的优点。10kv级三相油浸式配电变压器有密闭型和储油型，适用于工农业的10KV级厂房，矿山，石油化工及其他配电系统。它们在油污和化学物质较多的地方也很受欢迎。

10KV oil-immersed distribution transformers are important equipment in the distribution network and power supply and distribution systems of industrial & mining enterprises. It has the advantages of compact structure, beautiful appearance, small size, low noise, and strong overload capacity. 10kv class three phase oil-immersed distribution transformer has hermetically sealed type and conservator type. The transformer is applicable to plant, mine, petrol chemical and other power distribution system of 10kV class for industry and agriculture. They are also popular in sites with oil contamination and chemical substances.

10KV 级三相油浸式配电变压器技术参数

Tachnical Data for 10KV Class Three Phase Oil-Immersed Distribution Transformer

| 额定容量 (KVA) Rated Power | 高压 (KV) High Voltage | 低压 (KV) Low Voltage | 联结组别 Connection Symbol | 短路阻抗(%) Short Circuit Impedence | 损耗(W) Loss | | 空载电流 (%) No load Current |
|---------------------------------|-------------------------------|------------------------------|------------------------------|--|-------------------------|-------------------------|-----------------------------------|
| | | | | | 空载损耗(W) No-load Loss | 有载损耗(W) On-load Loss | |
| 30 | 4.16 | 0.208 | Dyn11 Yyn0 | 4 | 100 | 600 | 2.1 |
| 50 | | | | | 130 | 870 | 2 |
| 63 | | | | | 150 | 1040 | 1.9 |
| 80 | | | | | 180 | 1250 | 1.8 |
| 100 | | | | | 200 | 1500 | 1.6 |
| 125 | | | | | 240 | 1800 | 1.5 |
| 160 | | | | | 280 | 2200 | 1.4 |
| 200 | | | | | 340 | 2600 | 1.2 |
| 250 | | | | | 400 | 3050 | 1.2 |
| 315 | | | | | 480 | 3650 | 1.1 |
| 400 | | | | | 570 | 4300 | 1 |
| 500 | | | | | 680 | 5150 | 1 |
| 630 | | | | | 810 | 6200 | 0.9 |
| 800 | | | | | 980 | 7500 | 0.8 |
| 1000 | | | | | 1150 | 10300 | 0.7 |
| 1250 | | | | | 1360 | 12000 | 0.6 |
| 1600 | 1640 | 14500 | 0.6 | | | | |
| 2000 | 1940 | 17140 | 0.6 | | | | |
| 2500 | 2300 | 20260 | 0.5 | | | | |

注：以上数据仅以我司标准设计为准，特殊要求可定制。

Note: The above data is only subject to our standard design, special requirement can be customized.

S(B)H15-M 系列密封式
非晶合金变压器

S(B)H15-M Series Sealed Amorphous Alloy Transformer



S(B)H15-M系列非晶合金变压器，铁心采用单框或三相五柱卷铁心，铁心夹紧采用薄板成型框架结构，低压线圈为箔绕式，使之损耗低、抗短路能力强、结构先进合理、总体性能指标达到世界先进水平。

S(B)H15-M series sealed amorphous alloy transformer adopt single-frame or three-phase five-legged spiral core. The core is clamped with sheet-formed frame structure and the low-voltage coil is of a foil winding type so as to render a low loss and a high short-circuit withstand. It has advanced and rational structure and its overall performances reach international advanced level.

S(B)H15-M 系列密封式非晶合金变压器技术参数

Tachnical Data for S(B)H15-M Series Sealed Amorphous Alloy Distribution Transformer

| 额定容量 (KVA) Rated Power | 高压 (KV) High Voltage | 低压 (KV) Low Voltage | 联结组别 Connection Symbol | 短路阻抗(%) Short Circuit Impedence | 损耗(W) Loss | | 空载电流 (%) No load Current |
|---------------------------------|---|------------------------------|------------------------------|--|-------------------------|-------------------------|-----------------------------------|
| | | | | | 空载损耗(W) No-load Loss | 有载损耗(W) On-load Loss | |
| 30 | 6.3 6.6 10 10.5 11 or others | 0.4 | Dyn11 Yyn0 | 4 | 33 | 600 | 1.7 |
| 50 | | | | | 43 | 870 | 1.3 |
| 63 | | | | | 50 | 1040 | 1.2 |
| 80 | | | | | 60 | 1250 | 1.1 |
| 100 | | | | | 75 | 1500 | 1 |
| 125 | | | | | 85 | 1800 | 0.9 |
| 160 | | | | | 100 | 2200 | 0.7 |
| 200 | | | | | 120 | 2600 | 0.7 |
| 250 | | | | 140 | 3050 | 0.7 | |
| 315 | | | | 170 | 3650 | 0.5 | |
| 400 | | | | 200 | 4300 | 0.5 | |
| 500 | | | | 240 | 5150 | 0.5 | |
| 630 | | | | 320 | 6200 | 0.3 | |
| 800 | | | | 380 | 7500 | 0.3 | |
| 1000 | | | | 450 | 10300 | 0.3 | |
| 1250 | | | | 530 | 12000 | 0.2 | |
| 1600 | 630 | 14500 | 0.2 | | | | |
| 2000 | 750 | 17400 | 0.2 | | | | |
| 2500 | 900 | 20200 | 0.2 | | | | |

注：以上数据仅以我司标准设计为准，特殊要求可定制。

Note: The above data is only subject to our standard design, special requirement can be customized.

三相环氧树脂干式变压器

Three Phase Epoxy-resin Dry-type Transformer



三相环氧树脂干式变压器符合IEC726, GB6450, GB / T10228-1997标准, 具有损耗低, 体积小, 重量轻, 噪声低, 防潮, 机械强度高, 阻燃, 过载能力强, 局部放电质量低等特点。它们适用于输配电系统, 特别是重载中心和有特殊防火要求的场所。

Three-phase Epoxy-resin Dry-type Transformers are in conformity with standard of IEC726, GB6450, GB/T10228-1997, with features of low loss, compact and light weight, low noise level, damp-proof, high mechanical strength, flame resisting, strong overload ability and low partial discharge quality. They are applicable to power transmission and distribution system, especially to heavy load centers and places with special fire protection requirements.

35KV级三相环氧树脂干式变压器技术参数

Technical Data for 35KV Class Three Phase Epoxy-resin Dry-type Transformer

| 额定容量 (KVA) Rated Power | 高压 (KV) High Voltage | 低压 (KV) Low Voltage | 联结组别 Connection Symbol | 短路阻抗(%) Short Circuit Impedance | 损耗(W) Loss | | 空载电流 (%) No load Current |
|---------------------------------|-------------------------------|------------------------------|------------------------------|--|-------------------------|-------------------------|-----------------------------------|
| | | | | | 空载损耗(W) No-load Loss | 有载损耗(W) On-load Loss | |
| 50 | 35 38.5 or others | 0.4 | Dyn11 Yyn0 | 6 | 500 | 1500 | 2.8 |
| 100 | | | | | 700 | 2200 | 2.4 |
| 160 | | | | | 880 | 2960 | 1.8 |
| 200 | | | | | 980 | 3500 | 1.8 |
| 250 | | | | | 1100 | 4000 | 1.6 |
| 315 | | | | | 1310 | 4750 | 1.6 |
| 400 | | | | | 1530 | 5700 | 1.4 |
| 500 | | | | | 1800 | 7000 | 1.2 |
| 630 | | | | | 2070 | 8100 | 1.2 |
| 800 | | | | | 2400 | 9600 | 1.2 |
| 1000 | | | | | 2700 | 11000 | 1.0 |
| 1250 | | | | | 3150 | 13400 | 0.9 |
| 1600 | | | | | 3600 | 16300 | 0.9 |
| 2000 | | | | | 4250 | 19200 | 0.9 |
| 2500 | | | | | 4950 | 23000 | 0.9 |

注: 以上数据仅以我司标准设计为准, 特殊要求可定制。

Note: The above data is only subject to our standard design, special requirement can be customized.

20KV级三相环氧树脂干式变压器技术参数

Technical Data for 20KV Class Three Phase Epoxy-resin Dry-type Transformer

| 额定容量 (KVA) Rated Power | 高压 (KV) High Voltage | 低压 (KV) Low Voltage | 联结组别 Connection Symbol | 短路阻抗(%) Short Circuit Impedance | 损耗(W) Loss | | 空载电流 (%) No load Current |
|---------------------------------|-------------------------------|------------------------------|------------------------------|--|-------------------------|-------------------------|-----------------------------------|
| | | | | | 空载损耗(W) No-load Loss | 有载损耗(W) On-load Loss | |
| 50 | 20 22 24 | 0.4 | Dyn11 Yyn0 | 6 8 | 380 | 1300 | 2.4 |
| 100 | | | | | 600 | 2100 | 2.2 |
| 160 | | | | | 750 | 2600 | 1.8 |
| 200 | | | | | 820 | 3100 | 1.8 |
| 250 | | | | | 940 | 3600 | 1.6 |
| 315 | | | | | 1080 | 4300 | 1.6 |
| 400 | | | | | 1280 | 5100 | 1.4 |
| 500 | | | | | 1500 | 6100 | 1.4 |
| 630 | | | | | 1700 | 7200 | 1.2 |
| 800 | | | | | 1950 | 8700 | 1.2 |
| 1000 | | | | | 2300 | 10300 | 1.0 |
| 1250 | | | | | 2650 | 12150 | 1 |
| 1600 | | | | | 3100 | 14600 | 1 |
| 2000 | | | | | 3600 | 17250 | 0.8 |
| 2500 | | | | | 4300 | 20400 | 0.8 |

注: 以上数据仅以我司标准设计为准, 特殊要求可定制。

Note: The above data is only subject to our standard design, special requirement can be customized.

10KV级三相环氧树脂干式变压器技术参数

Technical Data for 10KV Class Three Phase Epoxy-resin Dry-type Transformer

| 额定容量 (KVA) Rated Power | 高压 (KV) High Voltage | 低压 (KV) Low Voltage | 联结组别 Connection Symbol | 短路阻抗(%) Short Circuit Impedance | 损耗(W) Loss | | 空载电流 (%) No load Current |
|---------------------------------|--|------------------------------|------------------------------|--|-------------------------|-------------------------|-----------------------------------|
| | | | | | 空载损耗(W) No-load Loss | 有载损耗(W) On-load Loss | |
| 50 | 6 6.3 6.6 10 10.5 11 13.2 or others | 0.4 | Dyn11 Yyn0 | 4 6 | 270 | 990 | 2 |
| 100 | | | | | 400 | 1570 | 1.8 |
| 160 | | | | | 540 | 2120 | 1.4 |
| 200 | | | | | 620 | 2520 | 1.4 |
| 250 | | | | | 720 | 2750 | 1.4 |
| 315 | | | | | 880 | 3460 | 1.2 |
| 400 | | | | | 970 | 3980 | 1.2 |
| 500 | | | | | 1160 | 4880 | 1.2 |
| 630 | | | | | 1340 | 5870 | 1 |
| 800 | | | | | 1520 | 6950 | 1 |
| 1000 | | | | | 1760 | 8120 | 0.8 |
| 1250 | | | | | 2090 | 9690 | 0.8 |
| 1600 | | | | | 2450 | 11730 | 0.8 |
| 2000 | | | | | 3320 | 14450 | 0.6 |
| 2500 | | | | | 4000 | 17170 | 0.6 |

注: 以上数据仅以我司标准设计为准, 特殊要求可定制。

Note: The above data is only subject to our standard design, special requirement can be customized.

三相箱式变压器

Three Phase Pad Mounted Transformer

01

终端型箱式变压器

Liquid-Filled Radial Feed Pad Mounted Transformer



介绍 General >>

终端型箱式变压器是一种油浸式三相商业箱式配电变压器，专门设计用于服务于购物中心，学校，机构和工厂等地下配电负载。它适用于带或不带丝锥的终端型应用。该变压器使用铝或铜绕组，并经过优化以最大程度地提高效率和占地面积。具有电压高，中性点无漂移，损耗小，体积小，成本效益，安全环保，外形美观等优点。我司终端型箱式变压器是根据行业标准（包括适用的CSA，ANSI C.57，DOE和IEEE）进行设计和测试的。

Liquid-Filled Radial Feed Pad Mounted Transformer is an oil-filled, three-phase, commercial pad mounted distribution transformer specifically designed for servicing such underground distribution loads as shopping centers, schools, institutions and industrial plants. It is available in both live front and dead front construction, for radial feed applications, with or without taps. The transformer uses aluminum or copper winding and is optimized to maximize efficiency and footprint. It has many advantages: such as high voltage, no drifting of neutral point, low loss, small volume, cost-effective, safety and environment protection, attractive appearance and etc. Our Liquid-Filled Radial Feed Pad Mounted Transformer is designed and tested in accordance with industry standards including CSA, ANSI C.57, DOE, and IEEE as applicable.

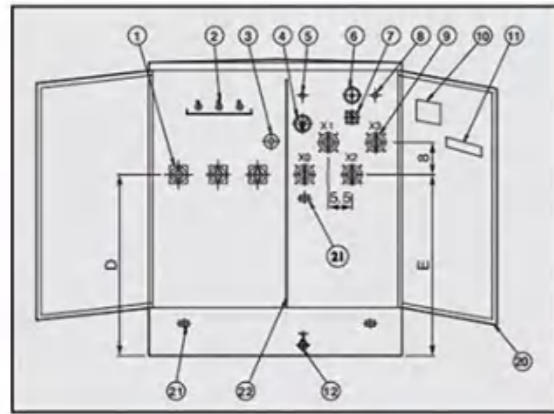
标准功能 Standard Features >>

- 低碳钢，可选不锈钢罐
 - 三点门锁门，确保安全
 - 可移动门槛，易于安装
 - 不锈钢橱柜铰链和安装螺柱
 - 带有可移动门槛的固定式柜子，其深度如下：
 - / 19英寸深，适用于300kVA至750 kVA
 - / 22英寸深，适用于1000kVA至1500kVA
 - / 24英寸深，适用于2000 kVA至3750kVA
 - / 30英寸深，适用于7500kVA至5000 Kva
 - 对于带电的正面结构，外部钳位高压瓷带有单个吊环螺栓的夹式连接器的套管（适用于#6 AWG实心至250 MCM绞合导体）。
 - 对于无前端结构，可使用外部夹紧的高压套管孔来卸荷或不卸荷插件。
 - 带120°固定杆的HV和LV隔室门为铰链式和提升式
 - 钢制HV / LV车厢隔板
 - 用LV上的一个五角螺栓进行挂锁
车厢门和HV上的两个五角螺栓
车厢门-含三点门锁机构
 - 高压连接：
 - / 带电的外部前部包裹和可拆卸的高压套管
 - 带吊环螺栓，夹式连接器
 - 低压连接：
 - / 外部夹紧的聚合物和瓷低压衬套，带有4-12孔铲
 - 500 kVA及以下的排油塞
 - 1英寸排水阀，带采样器，适用于750kVA及以上
 - 加油塞
 - 五脚铁芯/线圈组件。
 - 可移动的LV中性接地带；按要求
 - 符合ANSI要求的铭牌
 - 自动式溢流阀
 - 吊耳（4）
- Mild steel, optional stainless steel tank
 - Three-point latching door for security
 - Removable sill for easy installation
 - Stainless steel cabinet hinges and mounting studs
 - Bolted-on cabinet with removable sill having the following depths :
 - / 19" deep for 300kVA through 750 kVA
 - / 22" deep for 1000kVA through 1500kVA
 - / 24" deep for 2000 kVA through 3750kVA
 - / 30" deep for 5000 Kva through 7500kVA
 - For live front construction, externally clamped high voltage porcelain bushings with a single eyebolt, clamp-type connector (accommodates #6 AWG solid to 250 MCM stranded conductors).
 - For dead front construction, externally clamped high voltage bushing wells for loadbreak or non-loadbreak inserts.
 - HV and LV compartment doors-hinged and lift-off type with 120° holding bars
 - Steel HV/LV compartment barrier
 - Padlocking facility with one penta-head bolt on the LV compartment door and two penta-head bolts on the HV compartment door-including 3 point latching mechanism
 - HV connection:
 - / Live front-external clamped and removable HV bushings with eyebolt, clamp type connector
 - LV connection:
 - / Externally clamped polymer & porcelain LV bushing with 4-12 Hole spades
 - Oil drain plug for 500 kVA and below
 - 1" drain valve with sampler for 750 kVA and above
 - Oil fill plug
 - Five-legged core/coil assembly.
 - Removable LV neutral ground strap; as required
 - Nameplate per ANSI requirement
 - Self-actuating pressure relief valve
 - Lifting lugs (4)

可选配件 Optional Accessories >>

- 油位计
- 液体温度表
- 压力真空计
- 带手孔的焊接盖
- 带或不带采样器的排油阀
- 安装在油箱盖上的机械泄压装置
- 主终端:
 - 带负载断开插件的外部夹紧式套管孔
 - 整体式断负荷或无负荷套管
- 二级终端:
 - 带有NEMA 4孔, 6孔, 8孔, 10孔或12孔铲的外部夹紧式衬套
 - 提供铲形支撑。它们提供8孔或更大的铲状端子-主交换:
 - LBOR油开关: 一个用于终端型。
 - 外部无励磁分接开关
 - 外置双电压开关
 - 外接 Δ -Y开关
 - 2位负载断油开关
 - 4位T或V型刀片分段回路开关
- 过压保护:
 - 配电级, 金属氧化物避雷器, 3-36 kV。
 - 配电级, 阀式避雷器, 3-27 kV。
- 过电流保护:
 - 每个双敏熔丝上均装有塑料滴头杯
 - 弱链接盒保险丝
 - 双敏熔丝与内部部分范围限流熔断器串联
 - 二次下油断路器
- 其他构造选项:
 - 不锈钢水箱及柜体设计
 - 部分不锈钢设计 (柜门槛和罐底)
 - 30英寸或34英寸或40英寸深的机柜
 - CT或PT, 包括安装支持
 - LV外部安装的塑壳断路器
 - 外置电度表
 - 轻巧的翻盖式机柜
 - 其他外部安装的铭牌
 - 根据要求不同的油漆颜色
- 防风罩:
 - 变压器在机柜上可能具有可选的防风罩, 该防风罩通过铰链连接, 可以留出空间以更换双敏熔丝。
 - 可以方便地将防风罩提升到位并用单个支撑臂固定。
 - 防风罩不需要其他压紧硬件。
- Oil level gauge.
- Liquid temperature gauge.
- Pressure vacuum gauge.
- Welded cover with handhole.
- Oil drain valve with or without sampler.
- Mechanical pressure relief device mounted on tank cover.
- Primary termination:
 - Externally clamped bushing wells with loadbreak inserts
 - Integral loadbreak or non-loadbreak bushings
- Secondary termination:
 - Externally clamped bushings with NEMA 4-hole, 6-hole, 8-hole, 10-hole or 12-hole spades
 - Spade supports are available. They are provided for 8-hole spades and larger
- Primary Switching:
 - LBOR oil switch: one for radial feed.
 - Externally operated de-energized tap changer
 - Externally operated dual voltage switch
 - Externally operated Δ -Y switch
 - 2-position loadbreak oil switches
 - 4-position T or V blade sectionalizing loop switches
- Overvoltage Protection:
 - Distribution class, metal oxide arresters, 3-36 kV.
 - Distribution class, valve-type lightning arresters, 3-27 kV.
- Over-current protection:
 - Bayonet-type expulsion fuses with plastic drip cup mounted on each bayonet fuse
 - Weak link cartridge fuses
 - Bayonet type in series with internal partial-range current limiting fuses
 - Secondary under oil circuit breaker
- Additional construction options:
 - Stainless steel tank and cabinet design
 - Partial stainless steel design (cabinet sill and tank bottom)
 - 30" or 34" or 40" deep cabinet
 - CT's or PT's, including mounting support
 - LV externally mounted molded case breaker
 - Externally mounted kWh meter
 - Flip-top cabinet for low profile design
 - Additional externally mounted nameplate
 - Different paint color per requirement
- Weathercover:
 - Transformers may feature an optional weathercover over the cabinet which is hinged to allow clearance for replacement of the bayonet-type fuses.
 - The weathercover can be lifted easily into place and secured with a single supporting arm.
 - The weathercover requires no additional holddown hardware.

标准设计 Standard Design >>



| NO. | NAME | NO. | NAME |
|-----|-----------------------|-----|----------------------------|
| 1 | HV BUSHING | 12 | DRAIN VALVE WITH SAMPLER |
| 2 | BAY-O-NET FUSE | 13 | PAD LOCKABLE DOOR HANDLE |
| 3 | TAP CHANGER | 14 | LIFTING LUGS |
| 4 | DIAL TYPE THERMOMETER | 15 | HAND HOLE & SECURITY COVER |
| 5 | 1 IN FILL PIUG | 16 | TANK |
| 6 | PRESSURE VACUUM GAUGE | 17 | COOLING RADIATORS |
| 7 | LIQUID LEVEL GAUGE | 18 | JACKING PAD |
| 8 | PRESSURE RELIEF VALVE | 19 | JACKING PROVISIONS |
| 9 | LV BUSHING | 20 | DOOR |
| 10 | NAME PLATE | 21 | 2 HOLE HORIZ NEME GRD PAD |
| 11 | SERIAL NO | 22 | METAL LV-HV BARRIER |

三相终端型箱式变压器技术参数

Technical Data for Liquid-Filled Radial Feed Pad Mounted Transformer

| 额定容量 (KVA) Rated Power | 高压 (V) High Voltage | 低压 (V) Low Voltage | 损耗(W) Loss | | 尺寸(mm) Dimension | | | 重量(KG) Weight | |
|---------------------------------|------------------------------|-----------------------------|-------------------------|-------------------------|---------------------|--------|--------|------------------|--------------------|
| | | | 空载损耗(W) No-load Loss | 有载损耗(W) On-load Loss | 宽 W | 深 D | 高 H | 油重 Oil Weight | 总重 Total Weight |
| 75 | | | 180 | 1250 | 1390 | 910 | 1430 | 120 | 645 |
| 112.5 | 34500/ | | 200 | 1500 | 1420 | 920 | 1430 | 138 | 729 |
| 150 | 19920 | 240 | 280 | 2200 | 1510 | 980 | 1530 | 201 | 989 |
| 225 | 13800/ | 480 | 400 | 3050 | 1600 | 1000 | 1660 | 230 | 1195 |
| 300 | 7957 | 480Y/ | 480 | 3650 | 1660 | 1080 | 1680 | 260 | 1415 |
| 500 | 13200/ | 277 | 680 | 5100 | 1810 | 1160 | 1790 | 325 | 1905 |
| 750 | 7620 | 600Y/ | 980 | 7500 | 2030 | 1300 | 2030 | 535 | 2755 |
| 1000 | 12470/ | 347 | 1150 | 10300 | 1651 | 1549 | 1854 | 650 | 3235 |
| 1500 | 7200 | | 1640 | 14500 | 2210 | 1470 | 2150 | 748 | 5835 |
| 2000 | or others | | 2160 | 20645 | 2380 | 1600 | 2220 | 950 | 6430 |
| 2500 | | | 2680 | 27786 | 2480 | 1650 | 2330 | 1020 | 8865 |

注：以上数据仅以我司标准设计为准，特殊要求可定制。

Note: The above data is only subject to our standard design, special requirement can be customized.

02 三相环网型箱式变压器 Liquid-Filled Loop Feed Pad Mounted Transformer



介绍 General >>

环网型箱式变压器是一种油浸式三相商业箱式配电变压器，专门设计用于服务于购物中心，学校，机构和工厂等地下配电负载。它适用于带或不带丝锥的终端型应用。该变压器使用铝或铜绕组，并经过优化以最大程度地提高效率和占地面积。具有电压高，中性点无漂移，损耗小，体积小，成本效益，安全环保，外形美观等优点。我司环网型箱式变压器是根据行业标准（包括适用的CSA，ANSI C.57，DOE和IEEE）进行设计和测试的。

The Liquid-Filled Loop Feed Pad Mounted Transformer is an oil-filled, three-phase, commercial pad mounted distribution transformer specifically designed for servicing such underground distribution loads as shopping centers, schools, institutions and industrial plants. It is available in both live front and dead front construction, for loop feed applications, with or without taps. The transformer uses aluminum or copper winding and is optimized to maximize efficiency and footprint. It has many advantages: such as high voltage, no drifting of neutral point, low loss, small volume, cost-effective, safety and environment protection, attractive appearance and etc.

Our Liquid-Filled Loop Feed Pad Mounted Transformer is designed and tested in accordance with industry standards including CSA, ANSI C.57, DOE, and IEEE as applicable.

标准功能 Standard Features >>

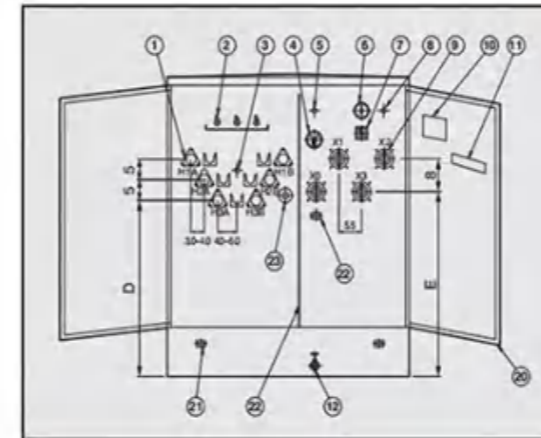
- 低碳钢, 可选不锈钢罐
- 三点门锁门, 确保安全
- 可移动门槛, 易于安装
- 不锈钢橱柜铰链和安装螺柱
- 带有可移动门槛的固定式柜子, 其深度如下:
 - / 19英寸深, 适用于300kVA至750 kVA
 - / 22英寸深, 适用于1000kVA至1500kVA
 - / 24英寸深, 适用于2000 kVA至3750kVA
 - / 30英寸深, 适用于7500kVA至5000 Kva
- 对于带电的正面结构, 外部钳位高压瓷带有单个吊环螺栓的夹式连接器的套管 (适用于 # 6 AWG实心至250 MCM绞合导体)
- 对于无前端结构, 可使用外部夹紧的高压套管孔来卸荷或不卸荷插件
- 带120° 固定杆的HV和LV隔室门为铰链式和提升式
- 钢制HV / LV车厢隔板
- 用LV上的一个五角螺栓进行挂锁
车厢门和HV上的两个五角螺栓
车厢门-含三点门锁机构
- 高压连接:
 - 带电的外部前部包裹和可拆卸的高压套管
 - 带吊环螺栓, 夹式连接器
- 低压连接:
 - 外部夹紧的聚合物和瓷低压衬套, 带有4-12孔铲
- 500 kVA及以下的排油塞
- 1英寸排水阀, 带采样器, 适用于750 kVA及以上
- 加油塞
- 五脚铁芯/线圈组件
- 可移动的LV中性接地带; 按要求
- 符合ANSI要求的铭牌
- 自动式溢流阀
- 吊耳 (4)
- Mild steel, optional stainless steel tank
- Three-point latching door for security
- Removable sill for easy installation
- Stainless steel cabinet hinges and mounting studs
- Bolted-on cabinet with removable sill having the following depths :
 - / 19" deep for 300kVA through 750 kVA
 - / 22" deep for 1000kVA through 1500kVA
 - / 24" deep for 2000 kVA through 3750kVA
 - / 30" deep for 5000 Kva through 7500kVA
- For live front construction, externally clamped high voltage porcelain bushings with a single eyebolt, clamp-type connector (accommodates #6 AWG solid to 250 MCM stranded conductors).
- For dead front construction, externally clamped high voltage bushing wells for loadbreak or non-loadbreak inserts.
- HV and LV compartment doors-hinged and lift-off type with 120° holding bars
- Steel HV/LV compartment barrier
- Padlocking facility with one penta-head bolt on the LV compartment door and two penta-head bolts on the HV compartment door-including 3 point latching mechanism
- HV connection:
 - Live front-external clamped and removable HV bushings with eyebolt, clamp type connector
- LV connection:
 - Externally clamped polymer & porcelain LV bushing with 4-12 Hole spades
- Oil drain plug for 500 kVA and below
- 1" drain valve with sampler for 750 kVA and above
- Oil fill plug
- Five-legged core/coil assembly.
- Removable LV neutral ground strap; as required
- Nameplate per ANSI requirement
- Self-actuating pressure relief valve
- Lifting lugs (4)

可选配件 Optional Accessories >>

- 油位计
- 液体温度表
- 压力真空计
- 带手孔的焊接盖
- 带或不带采样器的排油阀
- 安装在油箱盖上的机械泄压装置
- 主终端:
 - 带负载断开插件的外部夹紧式套管孔
 - 整体式断负荷或无负荷套管
- 二级终端:
 - 带有NEMA 4孔, 6孔, 8孔, 10孔或12孔铲的外部夹紧式衬套
 - 提供铲形支撑。它们提供8孔或更大的铲状端子-主交换:
 - LBOR油开关: 两个用于环网型
 - 外部无励磁分接开关
 - 外置双电压开关
 - 外接Δ-Y开关
 - 2位负载断油开关
 - 4位T或V型刀片分段回路开关
- 过压保护:
 - 配电级, 金属氧化物避雷器, 3-36 kV
 - 配电级, 阀式避雷器, 3-27 kV
- 过电流保护:
 - 每个双敏熔丝上均装有塑料滴头杯
 - 弱链接盒保险丝
 - 双敏熔丝与内部部分范围限流熔断器串联
 - 二次下油断路器
- 其他构造选项:
 - 不锈钢水箱及柜体设计
 - 部分不锈钢设计 (柜门槛和罐底)
 - 30英寸或34英寸或40英寸深的机柜
 - CT或PT, 包括安装支持
 - LV外部安装的塑壳断路器
 - 外置电度表
 - 轻巧的翻盖式机柜
 - 其他外部安装的铭牌
 - 根据要求不同的油漆颜色
- 防风罩:
 - 变压器在机柜上可能具有可选的防风罩, 该防风罩通过铰链连接, 可以留出空间以更换双敏熔丝
 - 可以方便地将防风罩提升到位并用单个支撑臂固定
 - 防风罩不需要其他压紧硬件

- Oil level gauge
- Liquid temperature gauge
- Pressure vacuum gauge
- Welded cover with handhole
- Oil drain valve with or without sampler
- Mechanical pressure relief device mounted on tank cover
- Primary termination:
 - Externally clamped bushing wells with loadbreak inserts
 - Integral loadbreak or non-loadbreak bushings
- Secondary termination:
 - Externally clamped bushings with NEMA 4-hole, 6-hole, 8-hole, 10-hole or 12-hole spades
 - Spade supports are available. They are provided for 8-hole spades and larger
- Primary Switching:
 - LBOR oil switch: two for loop feed.
 - Externally operated de-energized tap changer
 - Externally operated dual voltage switch
 - Externally operated Δ-Y switch
 - 2-position loadbreak oil switches
 - 4-position T or V blade sectionalizing loop switches
- Overvoltage Protection:
 - Distribution class, metal oxide arresters, 3-36 kV.
 - Distribution class, valve-type lightning arresters, 3-27 kV.
- Over-current protection:
 - Bayonet-type expulsion fuses with plastic drip cup mounted on each bayonet fuse
 - Weak link cartridge fuses
 - Bayonet type in series with internal partial-range current limiting fuses
 - Secondary under oil circuit breaker
- Additional construction options:
 - Stainless steel tank and cabinet design
 - Partial stainless steel design (cabinet sill and tank bottom)
 - 30" or 34" or 40" deep cabinet
 - CT's or PT's, including mounting support
 - LV externally mounted molded case breaker
 - Externally mounted kWh meter
 - Flip-top cabinet for low profile design
 - Additional externally mounted nameplate
 - Different paint color per requirement
- Weathercover:
 - Transformers may feature an optional weathercover over the cabinet which is hinged to allow clearance for replacement of the bayonet-type fuses.
 - The weathercover can be lifted easily into place and secured with a single supporting arm.
 - The weathercover requires no additional holddown hardware.

标准设计 Standard Design >>



| NO. | NAME | NO. | NAME |
|-----|-------------------------------|-----|----------------------------|
| 1 | HV BUSHING WEKKS ONLY | 13 | PAD LOCKABLE DOOR HANDLE |
| 2 | BAY-O-NET FUSE | 14 | LIFTING LUGS |
| 3 | 4-POSITION T-BLADE S/W | 15 | HAND HOLE & SECURITY COVER |
| 4 | DIAL TYPE THERMOMETER | 16 | TANK |
| 5 | I IN FILL PIUG | 17 | COOLING RADIATORS |
| 6 | PRESSURE VACUUM GAUGE | 18 | JACKING PAD |
| 7 | LIQUID LEVEL GAUGE | 19 | JACKING PROVISIONS |
| 8 | PRESSURE RELIEF VALVE | 20 | DOOR |
| 9 | LV BUSHING | 21 | METAL LV-HV BARRIER |
| 10 | NAME PLATE | 22 | 2 HOLE HORIZ NEME GRD PAD |
| 11 | SERIAL NO | 23 | TAP CHANGER |
| 12 | I IN DRAIN VALVE WITH SAMPLER | | |

三相环网型箱式变压器技术参数

Technical Data for Liquid-Filled Loop Feed Pad Mounted Transformer

| 额定容量 (KVA) Rated Power | 高压 (V) High Voltage | 低压 (V) Low Voltage | 损耗(W) Loss | | 尺寸(mm) Dimension | | | 重量(KG) Weight | |
|---------------------------------|------------------------------|-----------------------------|-------------------------|-------------------------|---------------------|--------|--------|------------------|--------------------|
| | | | 空载损耗(W) No-load Loss | 有载损耗(W) On-load Loss | 宽 W | 深 D | 高 H | 油重 Oil Weight | 总重 Total Weight |
| 75 | | | 180 | 1250 | 1390 | 910 | 1430 | 120 | 645 |
| 112.5 | 34500/ | | 200 | 1500 | 1420 | 920 | 1430 | 138 | 729 |
| 150 | 19920 | 240 | 280 | 2200 | 1510 | 980 | 1530 | 201 | 989 |
| 225 | 13800/ | 480 | 400 | 3050 | 1600 | 1000 | 1660 | 230 | 1195 |
| 300 | 7957 | 480Y/ | 480 | 3650 | 1660 | 1080 | 1680 | 260 | 1415 |
| 500 | 13200/ | 480Y/ | 680 | 5100 | 1810 | 1160 | 1790 | 325 | 1905 |
| 750 | 7620 | 277 | 980 | 7500 | 2030 | 1300 | 2030 | 535 | 2755 |
| 1000 | 12470/ | 600Y/ | 1150 | 10300 | 1651 | 1549 | 1854 | 650 | 3235 |
| 1500 | 7200 | 347 | 1640 | 14500 | 2210 | 1470 | 2150 | 748 | 5835 |
| 2000 | or others | | 2160 | 20645 | 2380 | 1600 | 2220 | 950 | 6430 |
| 2500 | | | 2680 | 27786 | 2480 | 1650 | 2330 | 1020 | 8865 |

注：以上数据仅以我司标准设计为准，特殊要求可定制。

Note: The above data is only subject to our standard design, special requirement can be customized.

单相箱式变压器

Single Phase Pad Mounted Transformer



介绍 General

江苏大林的单相箱变旨在提高kVA额定值的性能：紧凑的尺寸，更轻的重量，安全性和可持续性等方面。没有配电室，可以直接放置在室内或室外，也可以放置在街道和绿地上，可靠地确保人身安全，既有供电设施，又可以装饰环境。广泛用于居民区，商业中心，车站，机场，工厂，企业，医院，学校等场所。它是体型较小的箱型变压器，适合于在户外安装而无需额外的保护外壳，并且符合以下标准：IEC60076，ANSI/IEEE C57.12.00，C57.12.20，C57.12.38，C57.12.90和等等。

The single phase pad mounted transformer of JIANGSU DAELIM is designed to improve performance in terms of kVA rating, compact dimensions, lighter weight, safety, and sustainability. No distribution room, can be directly placed in the indoor or outdoor, can also be placed in the streets and the greenbelt and reliably ensure personal safety, both power supply facilities, but also decorate the environment. Widely used in residential areas, commercial centers, stations, airports, factories, businesses, hospitals, schools and other places. It is low-profile, compartment-type transformer, which supply suitable for mounting outdoors on pads without additional protective enclosures, and meet the following standard: IEC60076, ANSI/IEEE C57.12.00, C57.12.20, C57.12.38, C57.12.90 and etc.

标准功能 Standard Features

- 通过ISO 9001质量体系认证
- 达到或超过ANSI / IEEE和NEMA标准
- 油箱涂料超过IEEE Std C57.12.28™-2005和IEEE Std C57.12.29™-2005标准（仅不锈钢装置）
- 完全符合IEEE Std C57.12.28™-2005标准机柜完整性要求
- 自动泄压装置
- 流体填充和排放规定
- 激光刻铭牌
- 浮动锁袋，易于对准
- 衬套指定贴花设计
- 焊接箱盖
- 非腐蚀材料的防撞条
- 优质的油箱
- 可移动的门槛
- 嵌入式不锈钢起重装置
- 带有不锈钢铰链销和桶的铰链门
- X2到油箱地面的接地带
- 高压套管座，用于空接面肘型接头
- Quality System ISO 9001 certified
- Meet or exceeds ANSI/IEEE and NEMA standards
- Tank coating exceeds IEEE Std C57.12.28™-2005 and IEEE Std C57.12.29™-2005 standards (stainless steel units only)
- Full compliance with IEEE Std C57.12.28™-2005 standard enclosure integrity requirements
- Automatic pressure relief device
- Fluid fill and drain provisions
- Laser engraved nameplate
- Floating lock pocket for easy alignment
- Decal bushing designations
- Welded domed tank cover
- Tamper strips of noncorrosive material
- Crowned tank
- Removable sill
- Recessed stainless steel lifting provisions
- Hinged door with stainless steel hinge pins and barrels
- Ground strap from X2 to tank ground
- HV bushing wells for dead front elbow connectors

单相箱式配电变压器技术参数

Technical Data for Single Phase Pad Mounted Distribution Transformer

| 额定容量 (KVA) Rated Power | 高压 (V) High Voltage | 低压 (V) Low Voltage | 损耗(W) Loss | | 尺寸(mm) Dimension | | | 重量(KG) Weight | |
|---------------------------------|------------------------------|-----------------------------|-------------------------|-------------------------|---------------------|--------|--------|------------------|--------------------|
| | | | 空载损耗(W) No-load Loss | 有载损耗(W) On-load Loss | 宽 W | 深 D | 高 H | 油重 Oil Weight | 总重 Total Weight |
| 15 | 34500/ 19920 | 120-240 | 50 | 195 | 610 | 740 | 840 | 45 | 294 |
| 25 | 13800/ 7957 | | 80 | 290 | 610 | 740 | 840 | 68 | 362 |
| 37.5 | 13200/ 7620 | 240-480 | 105 | 360 | 610 | 760 | 840 | 75 | 476 |
| 50 | 12470/ 7200 | | 347 | 135 | 500 | 610 | 810 | 840 | 93 |
| 75 | 12470/ 7200 | 600 | 190 | 650 | 610 | 860 | 840 | 132 | 672 |
| 100 | 7200 or others | | 210 | 850 | 740 | 940 | 910 | 141 | 742 |
| 167 | | | 350 | 1410 | 760 | 1190 | 910 | 207 | 952 |

注：以上数据仅以我司标准设计为准，特殊要求可定制。

Note: The above data is only subject to our standard design, special requirement can be customized.

YB-PRE箱式变电站系列(欧式箱变)

YB-PRE Compact Substation (European box variable)



介绍 General

YB型箱式变电站又称欧式箱变,产品符合GB17467 - 1998《高低压预装式变电站》和IEC1330等标准,作为一种新型供电装置,它比传统土建变电站具有许多优越性。由于它体积小,占地面积小,结构紧凑,便于搬迁,因而大大缩短了基建的周期和占地面积,也减少了基建费用。同时,箱式变电站现场安装简单,供电迅速,设备维修简单,无须专人值守,特别是它可以深入负荷中心,对提高供电质量减少电能损失,增强供电的可靠性以及对配电网改选都是十分重要的。箱变完成电能的变换、分配、传输、计量、补偿,系统的控制、保护及通讯功能。

YB型变电站由高压开关柜,低压配电屏,配电变压器及外壳四部分组成,高压是空气负荷开关,变压器为干式变压器或油浸式变压器。箱体采用了良好的隔热通风结构,外观美观大方,隔热性能良好,且箱体设有上下通风的风道,户外隔射对变压器室及高低压室造成的温升可减少到最低限度。

YB type compact substations and says Europe type box change, GB17467- 1998 product conforms to the high and low voltage substation and IEC1330 preinstald type, such as a new standard for power distribution equipment, it than conventional civil substation has many advantages. Because of its small volume, cover an area of an area small, compact structure, easy to move, thus greatly shorten the construction period and covers an area of, also reduced the infrastructure expenses Meanwhile, the box-type convering stations on site nstallation is simple, rapid, equipment maintenance simple power substation, without special, especially it can further load centers, to improve the quality of power supply reduce power loss, enhance the riability and power of distribution network re- election are important Complete electricity transformation change box, the distribution, transmission, measurement, compensation, system control, protection and communications functions.

By high-voltage switchgear YB engineering-type substation, low-voltage distribution screen, distribution transformer and shell with a combination of four sections, high-pressure air load switch, transformer for dry type transformer or oil-immersed transformer Cabinet adopted good insulation ventilation structure, appearance beautiful generous, heat insulation performance is good, and the upper body sets, outdoor ventilated for every shot ducts and high or low voltage transformer room temperature can reduce the room caused to a minimum.

应用范围 Application Scope

适用于电压等35KV及以下,主变容量5000KVA及以下的小型无人值守变电站,广泛用于城市工业变电站、10KV环网系统、农网35KV变电所等场合。

Applicable to below 35KV voltage, etc, the main transformer capacity 5000KVA and below small substations, widely used in substation halting city industry substation, consumers 10KV ring net system, rural 35KV substation and so on.

主要特点 Main Features

将一、二次设备预装一个可移动的、全封闭、温度自控、防腐防潮防锈的箱体,运抵现场只须安装在水泥基础上。具有投资少、施工周期短、占地面积少、易与环境协调等特点。

Will the primary and secondary equipment installed a portable sealed, temperature control, anticorrosive moistureproof antirust the cabinet, arriving at the just installed in cement basis. Has less investment, construction period is short, covers an area of less, easy and harmonious environment etc. Characteristics.

三相环网型箱式变压器技术参数

Technical Data for YB Pre-installed Substation

| | 项目 Item | 单位 Unit | 参数 Data |
|--|---|------------|------------------------|
| 高压单元 HV | 额定频率 Rated Frequency | Hz | 50 |
| | 额定电压 Rated Voltage | kV | 6 10 35 |
| | 最高工作电压 Max Working | kV | 6.9 11.5 40.5 |
| | 工频耐受电压 Industrial Requency Voltage-resisting | kV | 32/36 42/48 95/118 |
| | 对地和相间/隔离断口 Time/isolation Ballistic Voltage-resisting | | |
| | 雷电冲击耐压 Thunderand Lighting Ballistic | kV | 60/70 75/85 185/215 |
| | 对地和相间/隔离断口 Voltage--resisting Time/iaolation Sectional Port | | |
| | 额定电流 Rated Current | A | 400 630 |
| | 额定短时耐受电流 Rated Brief - period Current-resisting | kA | 12.5(2s) 16(2s) 20(2s) |
| 额定峰值耐受电流 Rated Crest Value Current-resisting | kA | 32.5 40 50 | |
| 低压单元 LV | 额定电压 Rated Voltage | V | 380 220 |
| | 主回种额定电流 Rated Current Of Major Return Circuit | A | 100-3200 |
| | 额定短时耐受电流 Rated short-circuit Current-resisting | kA | 15 30 50 |
| | 额定峰值耐受电流 Rated Crest Value Current-resisting | kA | 30 63 110 |
| | 支路电流 Branch Circuit | A | 10-800 |
| 变压器单元 Transforming | 分支回路数 Quantity Of Branch | | 1-12 |
| | 补偿容量 Compensation Circuit | kVAR | 0-360 |
| | 额定容量 Rated Capacity | % | 4 6 |
| | 短路阻抗 Short- circuit Impedance | 1640 | 748±2x2.5%±5% |
| | 分接范围 Scope Of Branch Connection | 2160 | 950 |
| | 联接组别 Vector Group | 2680 | Yyn0 Dyn11 |

单相变压器

Single Phase Transformer



介绍 General

单相变压器可以单独用于提供单相负载，也可以作为三相负载单元中的一个。该设备可以直接安装在木杆或混凝土杆上，也可以簇集安装在杆上以供三相使用。变压器被设计用于住宅架空配电负载，它们还适用于轻商业负载，工业照明和多样化的电力应用。

The Single phase distribution transformer may be used alone for the supply of a single phase load or as one of three units in a bank for the supply of a three phase load. The unit may be direct-mounted to a wooden or concrete pole, or cluster mounted on a pole for three phase use. The transformers are designed for servicing residential overhead distribution loads. They are also suitable for light commercial loads, industrial lighting and diversified power applications.

传统型 Conventional Type

变压器为圆筒形密封结构。每一个都固定有接地装置，挂钩，符合ANSI标准的支撑吊耳，盖子上有一个或两个高压套管，低压套管在油箱壁上，螺栓以及连接端子。断开电源后，应根据操作手册调节分接开关。

The transformer is cylinder sealing structure. Each one is fixed with grounding devices, hooks, supporting lugs which conforms to ANSI standard, and one or two high voltage bushing on the cover, low voltage bushing on the wall of the tank and eyebolt, connecting terminals. The tap changer should be adjusted basing on the instruction after the power off.

CSP类型 CSP Type

CSP类型变压器，可以保护自身免受雷电，短路的，以及在配电线路上免受自身故障引起的断电影响。除了某些相似之处，例如圆筒，吊钩，吊耳，接地装置，铭牌，铁芯和常规类型的绕组。CSP变压器还具有以下特征和设备：变压器盖子上有一个或两个高压套管以及熔丝。在侧壁上安装一个或两个避雷器，避雷器的顶端靠近高压套管，并通过铜带连接到套管。油箱内部绕组上方有一个辅助断路器开关，操作手柄，过载重置装置和信号灯。从油箱侧壁上引出低压套管，接地装置固定在位置X2。单个套管的一端通过高压套管引出，另一端接地。产品均按照IEC60076，ANSI / IEEE57.12.20，CSA C2.1-06，CSA C2.2-06等标准生产。

This type of transformers are CSP type, which can protect itself from thunder and lightning, short circuit and protect the transiting and distribution line from current failure because of self-malfunction. Except from some similarities such as cylinder tank, hooks, lifting lugs, grounding devices, nameplates, core and winding with the conventional type. This type of transformers have characteristics and devices as follows: One or two high voltage bushings are on the cover with fuse. One or two arresters are installed on the wall of the tank, whose top end is near to the high voltage bushing, and connected to the bushing by a copper strip. One secondary breaker switch is above the winding inside the tank, and here are operating handle, overload reset and signal light. Low voltage bushing is educed from the wall of the tank, grounding device is fixed to position X2. One end of the single bushing leads out through the high voltage bushing, the other end is ground connection. All units are built in accordance with IEC60076, ANSI/IEEE57.12.20, CSA C2.1-06,CSA C2.2-06 and etc.

单相柱上配电变压器技术参数

Technical Data for Single-Phase Pole Mounted Distribution Transformer

| 额定容量 (KVA) Rated Power | 高压 (V) High Voltage | 低压 (V) Low Voltage | 损耗(W) Loss | | 尺寸(mm) Dimension | | | 重量(KG) Weight | |
|---------------------------------|------------------------------|-----------------------------|-------------------------|-------------------------|---------------------|--------|--------|------------------|--------------------|
| | | | 空载损耗(W) No-load Loss | 有载损耗(W) On-load Loss | 宽 W | 深 D | 高 H | 油重 Oil Weight | 总重 Total Weight |
| 5 | 34500/ 19920 | 120-240 | 19 | 75 | 465 | 485 | 855 | 15 | 92 |
| 10 | 13800/ 7957 | | 36 | 120 | 500 | 525 | 885 | 22 | 150 |
| 15 | 13200/ 7620 | 240-480 | 50 | 195 | 520 | 565 | 905 | 30 | 210 |
| 25 | 12470/ 600 | | 80 | 290 | 560 | 590 | 935 | 45 | 258 |
| 37.5 | 7200 or others | 347 | 105 | 360 | 610 | 625 | 935 | 50 | 340 |
| 50 | | 600 | 135 | 500 | 635 | 675 | 1035 | 62 | 395 |
| 75 | | | 190 | 650 | 745 | 840 | 1035 | 88 | 480 |
| 100 | | | 210 | 850 | 770 | 965 | 1135 | 94 | 530 |
| 167 | | | 350 | 1410 | 795 | 890 | 1335 | 138 | 680 |

注：以上数据仅以我司标准设计为准，特殊要求可定制。

Note: The above data is only subject to our standard design, special requirement can be customized.

销售记录

Sales Record

江苏林达鸿利电气有限公司一贯坚持“以人为本、以科技求发展、以质量争市场、以品牌创效益”的方针，严格奉行“诚实、守信”经营理念，积极发展品牌兴企的战略，努力打造一流的知名企业，不断进取、与时俱进，为广大客户提供优质的产品和服务。通过公司全体员工的不懈努力，林达鸿利电气正在实现稳步发展。

Jiangsu Daelim Electric Co., Ltd always keep in mind that "People First, Science and Technology for Development, Quality for Market and Brand name Benefit" is the key words of one company; strict adherence to the business philosophy of "honest and trustworthy"; actively develop the brand of enterprise development strategy in order to create first-class well-known enterprises supplying the high quality products and good service. Through the unremitting efforts of all the company, Daelim is achieving steady development.

| | 2018 (USD) | 2019 (USD) | 2020 (Potential) (USD) |
|------------------------|---------------|---------------|------------------------------|
| Sales Revenue (USD) | 35,250,000.00 | 42,550,000.00 | 50,500,000.00 |

我们的产品出口到亚洲、美洲、欧洲、非洲、大洋洲的各个国家，逐步实现品牌全球化。以下为林达鸿利电气近两年的主要市场及销售占比。

Our products are exported to various countries in Asia, America, Europe, Africa and Oceania, gradually realizing brand globalization. The following are the main markets and sales proportions of Daelim Electric in the past two years.

| 2018 | | 2019 | |
|---------|----|---------|----|
| Area | % | Area | % |
| America | 45 | America | 40 |
| Asia | 25 | Asia | 25 |
| Africa | 10 | Africa | 15 |
| Europe | 5 | Europe | 10 |
| Other | 15 | Other | 10 |

DAELIM BELEFIC

国外工程案例

Overseas Project Cases



墨西哥化工厂电炉变

Furnace Transformer operating in Chemistry Factory, Mexico



哈萨克斯坦变电站110kV主变

American type Pad Mounted Transformer in Solar Plant, Honduras



巴拿马咖啡农场单相箱变

Single Phase Pad Mounted Transformer operating in Coffee Farm, Panama



加拿大柱上式单相变压器

Singe phase pole mounted transformers operating in Canada



澳大利亚电站主变

Power Transformer operating in power substation, Australia



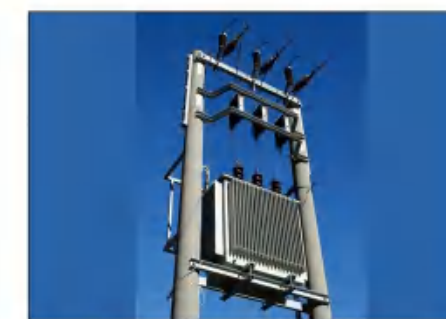
厄瓜多尔电站69kV 主变

69kV Power Transformer in power substation, Ecuador



洪都拉斯太阳能电站美式箱变

110kV power transformer operating in power substation, Kazakhstan



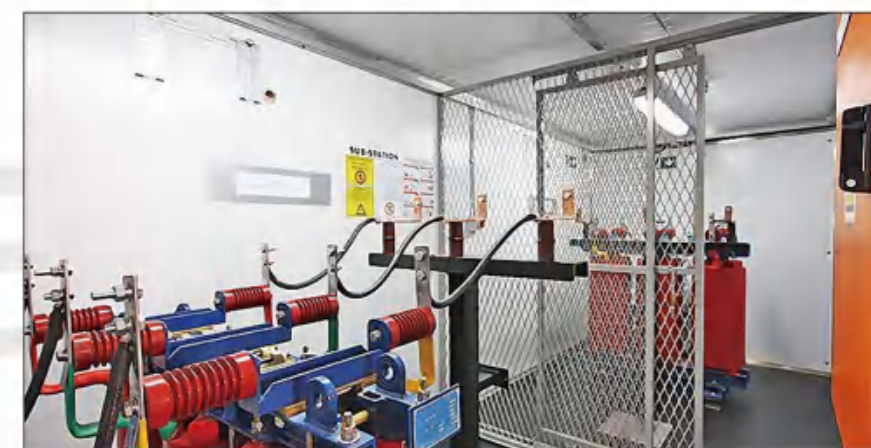
新几内亚柱上式配电变压器

Pole Mounted Distribution Transformer in New Guinea



厄瓜多尔69kV移动式变电站

69kV mobile substation operating in Ecuador



越南机场干式变压器

Cast Resin Dry type transformer in airport, Vietnam

企业服务

Enterprise Service

江苏林达鸿利电气有限公司一贯坚持“以人为本、以科技求发展、以质量争市场、以品牌创效益”的方针，严格奉行“诚实、守信”经营理念，积极发展品牌兴企的战略，努力打造一流的知名企业，不断进取、与时俱进，为广大客户提供优质的产品和良好的售后服务。

衷心感谢贵单位使用江苏林达鸿利电气有限公司产品，为使贵单位放心使用本公司产品，江苏林达鸿利电气对产品质量的售后服务承诺如下：

一 江苏林达鸿利电气售出的产品均为严格按照国标及相关行业标准生产，产品质量实行一年内免费“三包”。

二 江苏林达鸿利电气售出产品如因非人为因素导致变压器性能及技术问题，江苏林达鸿利电气将无条件更换，并承担相应的经济损失和赔偿。对由于其它原因造成的问题，江苏林达鸿利电气将积极协助解决用户困难，以保证产品及时投运，将损失减少到最低限度。

三 对售出的产品，江苏林达鸿利电气将积极配合用户搞好变压器的现场运行和维护管理。并可根据用户需要，提供成本价的备品备件。

四 “质量第一，用户至上”是江苏林达鸿利电气有限公司的准则，如产品发生质量问题，江苏林达鸿利电气有限公司将以最快的时间赶到现场。

五 此承诺书以传真件加盖江苏林达鸿利电气有限公司公章后生效。

Jiangsu Daelim Electric Co., Ltd always keep in mind that "People First, Science and Technology for Development, Quality for Market and Brand Name Benefit" is the key words of one company; strict adherence to the business philosophy of honest and trustworthy"; actively develop the brand of enterprise development strategy in order to create first-class well-known enterprises supplying the high quality products and good after-sales service.

Thanks for using the products of Jiangsu Daelim Electric Co.,Ltd, our company commits to product quality after-sales service as follows for you relying on our products :

1 All the products of Jiangsu Daelim Electric Co.,Ltd are in strict accordance with the international standard production and related industry. The quality of the product for one year free "three guarantees".

2 Sold products of Jiangsu Daelim Electric Co.,Ltd without the human factors leading to the transformer performance and technical problems, Jiangsu Daelim Electric Co.,Ltd will the unconditional replacement and bear the corresponding economic losses and damages. For the problems caused by other reasons, our company will actively assist solve the difficult of the customers in order to ensure product put into operation in time and reduce losses to a minimum.

3 For the sold products, Jiangsu Daelim Electric Co.,Ltd will actively cooperate with the customer site operation and maintenance management to improve the quality of the transformer and provide the cost price of spare parts according to the the need of the customer.

4 Jiangsu Daelim Electric Co.,Ltd take Quality First, User Paramountcy as tense, such as the quality problems occur the Company will rush to the scene at the fastest time.

5 This letter of commitment will come into effect after stamping the seal of Jiangsu Daelim Electric Co.,Ltd