



DAELIM BELEFIC

DAELIM BELEFIC SINGLE PHASE POLE MOUNTED TRANSFORMER PROJECT

TABLE OF CONTENTS

01.

About DAELIM

02.

Project case in USA

03.

Project case in Canada

04.

Project cases

05.

Customer comments

01. About DAELIM

DAELIM Introduction



1. **R&D Capabilities:**

They have strong R&D team and they have more than 20 years of transformer design experience and are familiar with lots of international transformer standards, such as IEC, IEEE / ANSI, CSA, etc. The technical team of DAELIM are experts, electrical engineers, CAD first-class draftsmen, etc. They also use the latest technology, machines and other modern facilities to produce transformers, but meanwhile DAELIM transformers are made of qualified standard materials which meets the standards of world-renowned suppliers through international procurement as well.

1. **Quality Control:**

Quality is one of the core value of DAELIM. FAT, Type and third party inspection test are provided for quality and they tend to provide the best to its clients that's why they strictly implement the ISO 9001 quality management system.

2. **Company Certifications:**

ISO 9001:2008 CSA certification CESI certification CNAS certification SGS certification

1. **Company Certifications:**

The Daelim team is full of experts and professional, this helps them to solve the customers' problems quickly. All the DAELIM team had systematic training and is committed to continuous improvement by the quality guidelines and practices. Their dedicated customer service, product innovation, engineering excellence and strong social & environmental responsibility sense have made them to become a valued & trusted power solutions partner for globe electric industry.

Certifications



CUSTOMER CONCERNS:

For the new customers, when they contact new suppliers, they will have many concerns. DAELIM eliminates customer these concerns through professional team communication.

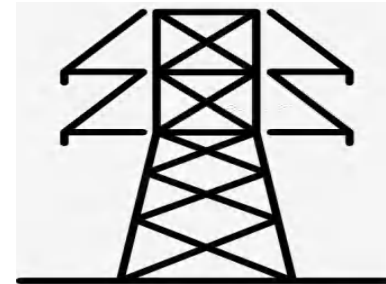


1.The supplier is a manufacturer?

DAELIM: We are a professional IEC,ANSI/IEEE, CSA and AS standard transformer manufacturers. We accept any third party to audit factory.

2.They can provide faster delivery time than our previously supplier?

DAELIM: For normal transformers, our standard production time is 4-6 weeks, for customized transformer, our fastest production time is 6-8 weeks.



3.They can meet the T&D or products requirements?

DAELIM: We have a professional tech and production team. Our team can do transformer customized design and production as per customer requests.

4.They can meet our countries standard?

DAELIM: Our engineering team consists of many experienced experts. They are very professional and familiar with international standards.

5.How about their transformers price?

DAELIM: Because our factory located in the transformer base in China, we have well raw material supply chain. So we can always provide the competitive price to our customers.

6.They have experience in my country?

DAELIM: We are exported more than 30 countries around the world. And we are happy share our project case for our customer reference.

02.

Project Case in USA

Pole mounted transformer project

The challenge:



ITEMS



DELIVERY TIME



CUSTOMIZED

This project has 240 transformers, a total of 14 different items. DAELIM need detailed design for each items. Daelim was asked to provide production drawings within a month.

Due to the project needs of end users, part of them need to be finished within 10 weeks, and others need to be shipped soon after that. It is a little difficult for DAELIM.

The single-phase transformer needs to meet the standards of IEEE standard, and the efficiency need to meet DOE efficiency, there is requirement for the Polarity, 250kva and 333kva are square

Location: USA

Quantities: 240 sets

Description: Pole mounted capacity from 15kva to 333kva

DAELIM SOLUTIONS:

Understanding our customer needs allows us to make critical must-be-made decisions directly related to their needs.

1. Fast submit the drawing

In order to meet the lead time requirement, DAELIM engineer team submitted the drawings in batches. 50% of the drawings were submitted around two weeks and put into production in time. The remaining drawings were successfully submitted in the remaining two weeks after confirmed the Polarity.

2. Make a good production plan

Because the customer need the single phase transformers very urgent, so DAELIM's managements pay more attention on them, and let workers work on the more urgent items, that makes the process quicker and quirkier then met the lead time.

3. 100% meet the standard requirements

Our team of engineers studied the IEEE Standard carefully. And they discussed together with the DOE effieicny with the Polarity required for different capacity, after confirmed, they started the design, finally, we submitted the perfect drawings.

Project Case to USA



TRANSFORMER TESTING

1. Ratio, Polarity, and Phase Relation
2. Resistance
3. Applied Potential
4. Induced Potential
5. Loss Test
6. Leak Test
7. Operation tests of all devices

When finish the production, DAELIM did above FAT tests for each transformer one by one, and submit the testing report in time.



TRANSFORMER PACKING AND SHIPPING

For single phase transformer, we used the wooden frame structure for the capacity up to 50kva, so it will save space and sea shipping cost.

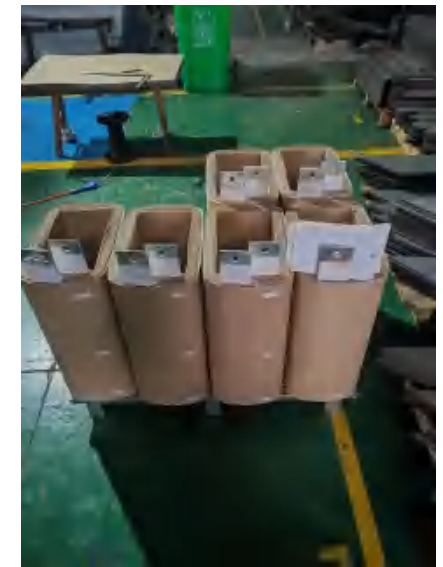
For pad mounted transformer, we used the wooden pallet packing design, the customers can easy to take out the pad mount transformer from container.



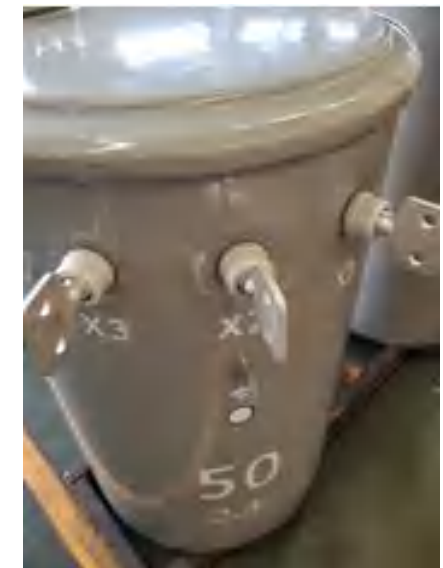
03.

Project Case in Canada

Project Case to Canada



Through the efforts of the whole team, we delivered all units as customer's requirement



Pole mounted transformer project

The challenge:



ITEMS



DELIVERY TIME



CUSTOMIZED

This project has 357 transformers, a total of 20 different items. DAELIM need detailed design for each items. Daelim was asked to provide production drawings within three weeks.

Due to the project needs of end users, the production time of transformer is only 90 days. But DAELIM 's production line is full at that time because other customers order.

The single-phase transformer needs to meet the standards of CSA 2.1 and CSA 2.2, and the design of transformer parts and marks of transformers need to customize production.

Location: Canada

Quantities: 357 sets

Description: Pole mounted up to 167kva

DAELIM SOLUTIONS:

Understanding our customer needs allows us to make critical must-be-made decisions directly related to their needs.

1. Fast submit the drawing

In order not to affect the delivery time, DAELIM engineer team delivered the drawings in batches. 60% of the drawings were delivered within two weeks and production was arranged in time. The remaining drawings were successfully delivered in the remaining two weeks.

2. Make a good production plan

DAELIM's management pay much attention to the needs of customers, and has communicated with the production team and our supplier team for many times. The workers worked overtime to ensure the delivery of the customer requests.

3. 100% meet the standard requirements

Our team of engineers studied the CSA Standard carefully. Because they are based on IEEE standard, DAELIM designed and produced them according to it. For the existing technical problems or difference, our team has carried out hundreds of e-mail and telephone communication with customers.

TRANSFORMER TESTING

1. Ratio, Polarity, and Phase Relation
2. Resistance
3. Applied Potential
4. Induced Potential
5. Loss Test
6. Leak Test
7. Operation tests of all devices

When finish the production, DAELIM did above FAT tests for each transformer one by one, and submit the testing report in time.



TRANSFORMER PACKING AND SHIPPING



For single phase transformer, we used the wooden frame structure for the capacity up to 50kva, so it will save space and sea shipping cost.

For pad mounted transformer, we used the wooden pallet packing design, the customers can easy to take out the pad mount transformer from container.



TRANSFORMER INSTALLATION

Finally, after three months of production and one month of shipping, 357 sets transformers finally reached the customer's location. Relevant tests were carried out before the customer put into operation, and all the transformers produced by DAELIM met the technical requirements of the customer.



04 Project Case

- In other areas

Project Case to Honduras

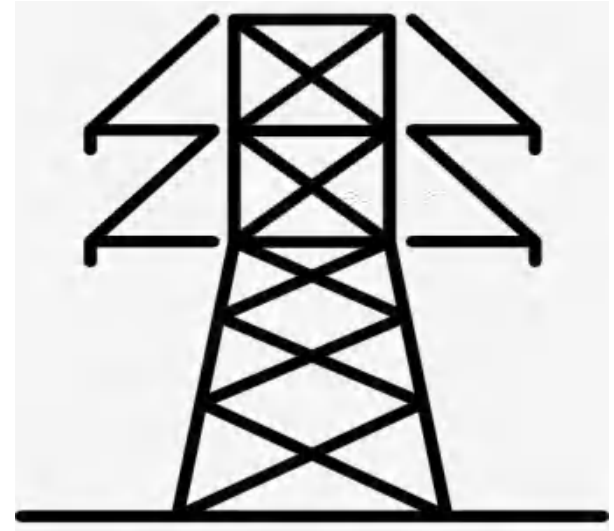


Project Case to Guyana



05. Customer Comments

Customer Say:



Testimonials

During 3 years works with Daelim we found that they are a very high-effective team. Both their sales and engineers can speak very good English. Their transformers are super, people are so nice and with professional engineers. I know they must provide you very good transformers and services. Thanks for Daelim team who always give us quick reply and good prices. Hope we two company can gain more markets in the future!



DAELIM BELEFIC

Thank you